

# KINUSO SCHOOL 2024-27 EDUCATION PLAN (YEAR 3)



## Mission

Kinuso School, in conjunction with High Prairie School Division No. 48, is committed to fostering the development of reasoning, responsible, and resourceful citizens within a purposeful learning environment. To nurture an active appreciation for learning, the students, staff, parents, and community must work in concert, fully utilizing available resources.

## Vision

At Kinuso School we have pride in our community. We show respect through our actions, words and attitudes. We are united in striving for everyone's success.

[hpsd.ca](http://hpsd.ca)

On behalf of Kinuso staff, High Prairie School Division and myself I am pleased to present the 2024-27 Kinuso Education Plan. Within these pages you will find Division priorities, outcomes and strategies, along with corresponding measures that have been identified as a result of consultation with stakeholders.

Kinuso School continues to garner feedback to inform our planning process. This year we have seen a growth in our students academically and as model citizens. The growth has been evident in our assessment data and by watching student-athletes during sporting events. We want to continue this work going forward, and the education plan allows us to increase literacy/numeracy skills as well as citizenship. It gives us a guideline and path which will allow our students continued growth. The plan has achievable measures which I believe are important for the students to achieve at school and for life outside of school.

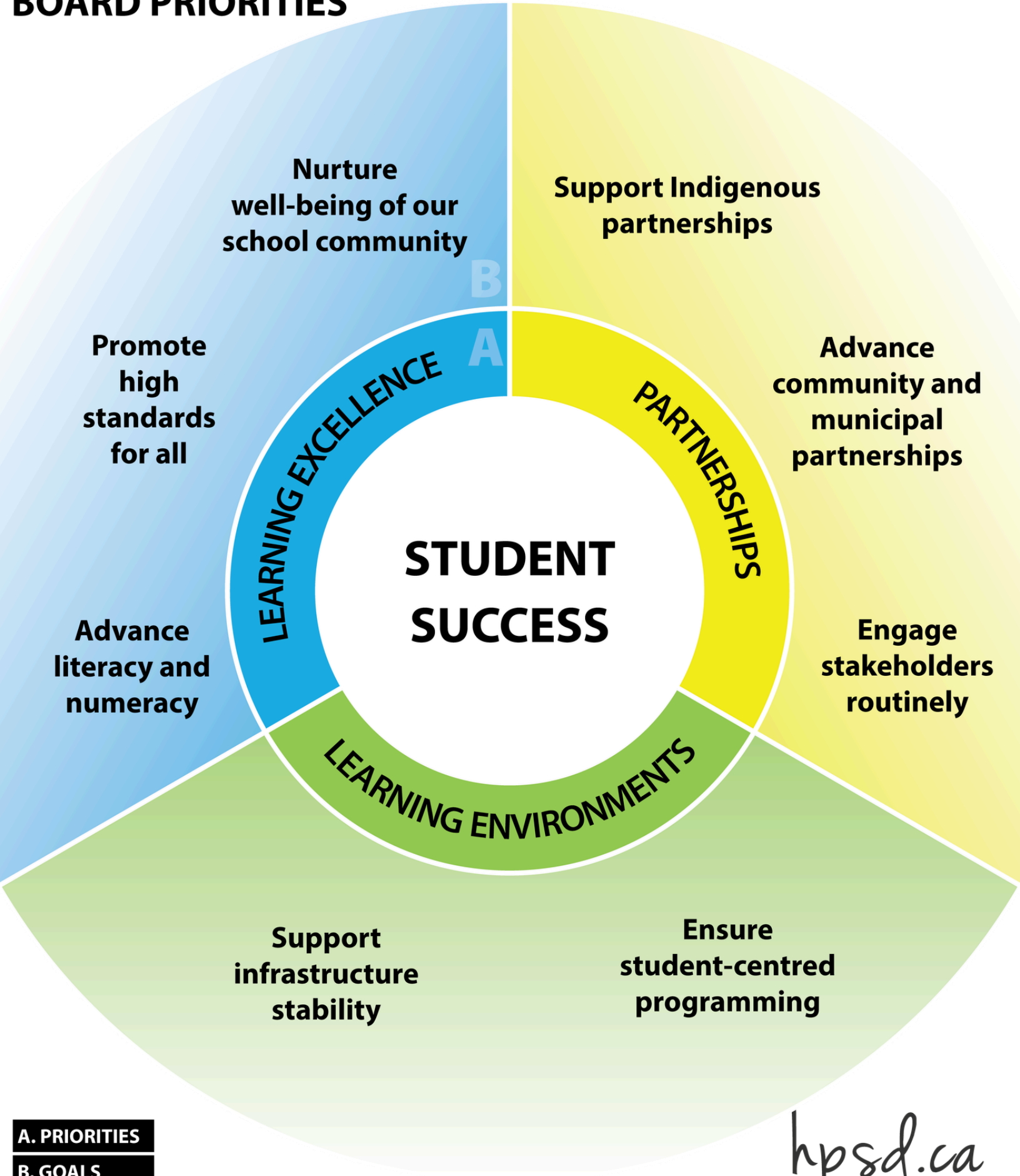
The priorities in the education plan are:

- Literacy
- Numeracy
- Stakeholder engagement
- Mental health
- Character Education

We encourage you to look through this lens into our school and would appreciate hearing from you as your voice and opinions are important to staff and the students at Kinuso.

Chris King, Principal

# HIGH PRAIRIE SCHOOL DIVISION BOARD PRIORITIES



**A. PRIORITIES**  
**B. GOALS**

*hpsd.ca*

# BOARD OUTCOME: LEARNING EXCELLENCE - LITERACY

## SCHOOL OUTCOME: TO IMPROVE THE LITERACY SKILLS OF KINUSO STUDENTS

### STRATEGIES

It is the goal of Kinuso School to provide our students with quality Literacy instruction. Kinuso School wants to ensure that our students obtain the ability and confidence to read, write speak and listen in a way that lets them communicate effectively and make sense of the world. Kinuso School will use the HPSD Literacy Framework to guide literacy planning and instruction.

**Professional Development:** Provide ongoing professional development opportunities for teachers to strengthen their literacy instruction skills, through workshops, seminars, and peer collaboration.

**Literacy Across the Curriculum:** Implement literacy strategies such as plaid phonics, close reading, think-alouds, and writing across all subject areas. Implement vertical literacy (teaching literacy in groups by reading levels not grade levels within the classroom). Teachers will receive training and resources to effectively integrate these strategies into their lessons. Teachers will focus on student writing using resources written by Adrienne Gear.

**Intervention:** provide a variety of supports and interventions for reading and writing made available to students.

**Differentiated Instruction:** Offer a range of instructional approaches, including small group instruction, peer tutoring, and flexible grouping, to meet the diverse needs of students. Utilize assessment data to inform instruction and provide targeted support.

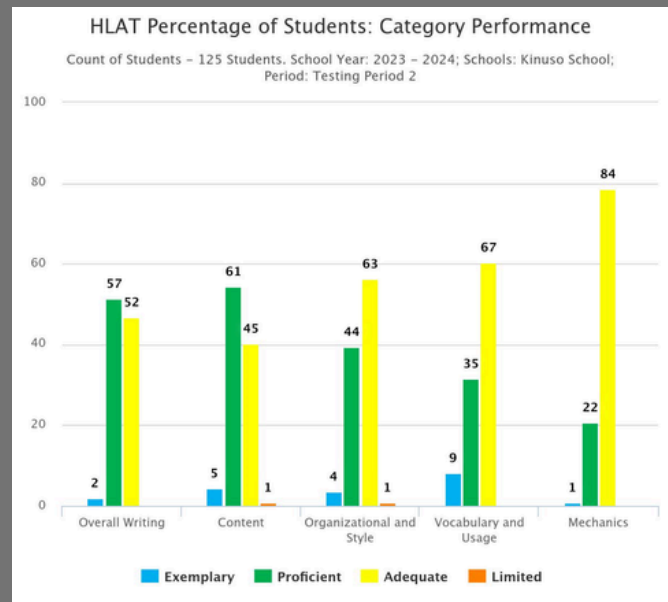
**Family Literacy Nights:** Host family literacy nights to engage parents and caregivers in supporting literacy development at home. Provide resources and activities that promote reading and writing as a family.

**Community Partnerships:** Collaborate with municipal libraries, literacy organizations, and businesses to provide students with access to additional literacy resources and experiences, such as author visits, book clubs, and writing contests.

**Technology Integration:** Incorporate technology tools such as digital libraries, educational apps, and interactive whiteboards to enhance literacy instruction. Provide training for teachers and students on how to effectively use these tools for reading, writing, and research.

### PERFORMANCE MEASURES/GOALS

HLAT- we will increase 10% in all areas (content, organization and style, vocabulary and usage, mechanics and overall writing)

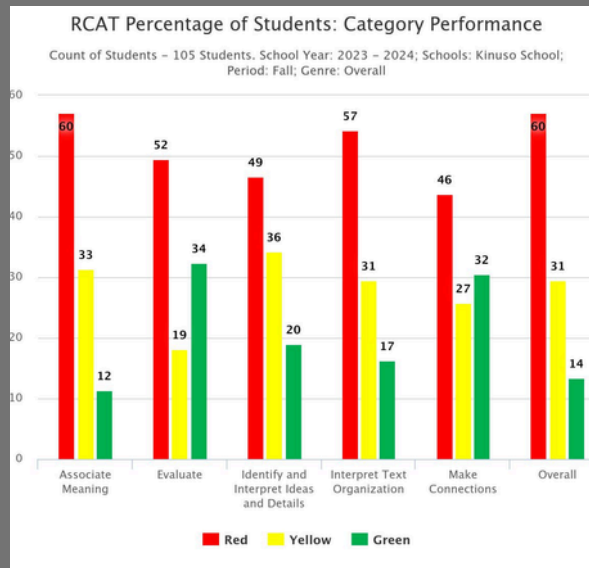


# BOARD OUTCOME: LEARNING EXCELLENCE - LITERACY

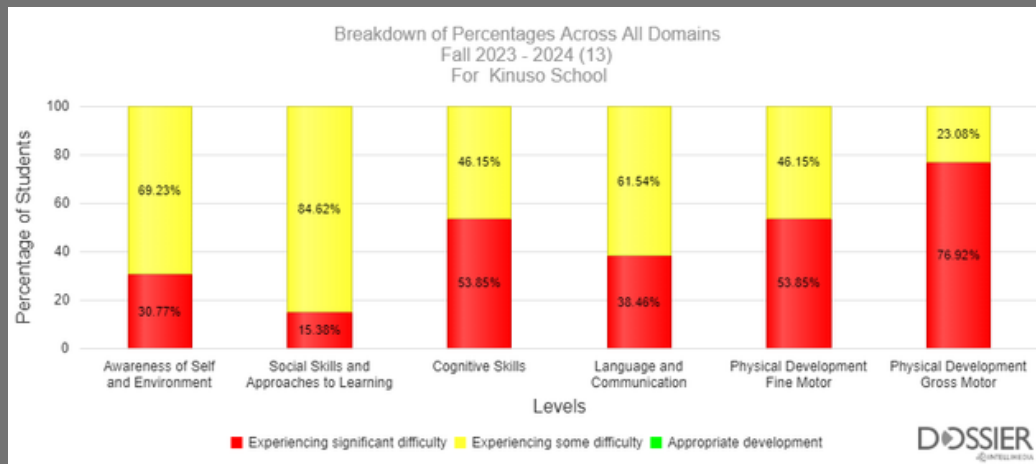
## SCHOOL OUTCOME: TO IMPROVE THE LITERACY SKILLS OF KINUSO STUDENTS

### PERFORMANCE MEASURES/GOALS

RCAT - increase comprehension 10% in all areas ( Associate meaning, evaluate, identify and interpret ideas and details, interpret text organization, make connections, overall)



EYE - increase in all areas by 10% (Awareness of self and environment, social skills and approaches to learning, cognitive skills, language and communication, physical development fine motor skills, physical development gross motor).



## SCHOOL OUTCOME: TO IMPROVE THE NUMERACY SKILLS OF KINUSO STUDENTS

### STRATEGIES

It is the goal of Kinuso School to provide our students with quality Numeracy instruction. Kinuso School wants to ensure that our students obtain the ability and confidence to engage with quantitative and spatial information to make informed decisions in all aspects of daily living. Kinuso School will use the HPSD Numeracy Framework to guide numeracy planning and instruction.

**Curriculum Alignment:** Align mathematics instruction with Alberta standards and curriculum frameworks to ensure a coherent and sequential progression of mathematical topics from kindergarten through grade twelve. Teachers will be using researched based curriculum aligned resources, such as Math Up, to ensure outcomes are being met.

**Hands-On Manipulatives:** Incorporate hands-on manipulatives and concrete materials to support conceptual understanding and engage students in meaningful mathematical experiences.

**Problem-Based Learning:** Implement problem-based learning tasks that require students to apply mathematical concepts to solve real-world problems. Encourage collaboration and discussion to foster a deeper understanding of mathematical concepts.

**Differentiated Instruction:** Offer a variety of instructional strategies, including small group instruction, peer tutoring, and flexible grouping, to meet the diverse needs of learners. Provide additional support and enrichment opportunities as needed.

**Assessment** - Interweaving assessment throughout the year (constantly reviewing and assessing past outcomes/lessons/strands with new ones).

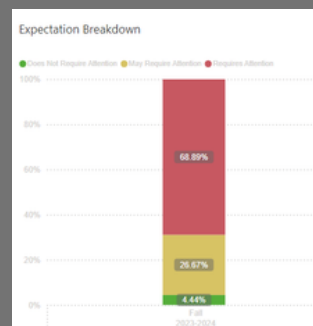
**Technology Integration:** Integrate technology tools such as interactive whiteboards, graphing calculators, and educational apps to enhance mathematics instruction. Provide training for teachers and students on how to effectively use these tools to support learning.

### PERFORMANCE MEASURES

Decrease students at risk by 15% with intervention and interweaving assessment (Provincial Test Grades 2-4)



Decrease students at in the at risk range by 15%. Increase the number of students reaching grade level by 15%



# BOARD OUTCOME: PARTNERSHIPS - STAKEHOLDER ENGAGEMENT

## SCHOOL OUTCOME: TO IMPROVE THE LEVEL OF ENGAGEMENT BETWEEN THE SCHOOL AND THE COMMUNITY

### STRATEGIES

#### Establish Clear Communication Channels

Newsletters: Create monthly newsletters to keep stakeholders informed about school events, achievements, and opportunities for involvement.

School Website and Social Media: Maintain an up-to-date website and active social media presence to share news and gather feedback.

School Council Meetings: Schedule regular meetings with various stakeholder groups to discuss concerns and suggestions.

By building relationships with the community and parents there will be a belief about the importance of education which will lead to an increase in attendance.

#### Develop a Collaborative Culture

Open Door Policy: Encourage open communication by allowing stakeholders to voice concerns and ideas freely.

Inclusive Decision-Making: Involve stakeholders in key decisions by creating advisory committees and councils that include representatives from each stakeholder group.

Feedback Mechanisms: Implement surveys and suggestion boxes to gather continuous feedback from students, parents, and staff.

#### Organize Engagement Events

Community Events: Host events such as school fairs, coffee house, sports events, open houses, monthly assemblies, bingo nights, movie nights, and cultural festivals to engage the community.

Student Showcases: Organize events where students can showcase their work and talents, inviting parents and community members to attend and celebrate student achievements.

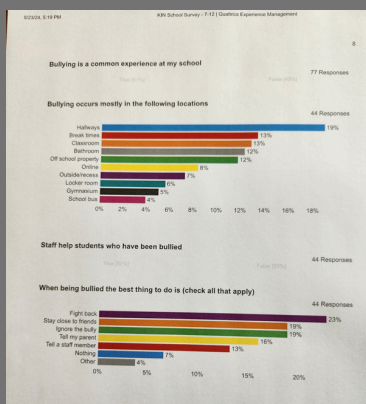
### PERFORMANCE MEASURES

Gather baseline data on the number of community members attending events

Increase number of parents attending school council

Increase attendance to 80%

Student survey - increase a safe environment in the hallways for students



Attendance Summary (2023-2024)  
from 2023-09-05 to 2024-05-22  
Kinuso School

| Grade    | Export to Pdf    Export to Excel |     |     |     |     |     |     |     |     |     | Average |
|----------|----------------------------------|-----|-----|-----|-----|-----|-----|-----|-----|-----|---------|
|          | Sep                              | Oct | Nov | Dec | Jan | Feb | Mar | Apr | May |     |         |
| K        | 87%                              | 81% | 79% | 79% | 78% | 81% | 81% | 86% | 82% | 82% |         |
| 1        | 83%                              | 79% | 76% | 75% | 74% | 72% | 80% | 90% | 87% | 80% |         |
| 2        | 91%                              | 92% | 87% | 83% | 92% | 87% | 89% | 89% | 82% | 88% |         |
| 3        | 91%                              | 82% | 91% | 74% | 79% | 70% | 76% | 81% | 87% | 81% |         |
| 4        | 88%                              | 81% | 83% | 74% | 81% | 77% | 75% | 85% | 82% | 81% |         |
| 5        | 89%                              | 81% | 81% | 77% | 76% | 72% | 76% | 85% | 76% | 80% |         |
| 6        | 89%                              | 86% | 87% | 84% | 75% | 79% | 77% | 79% | 81% | 82% |         |
| 7        | 84%                              | 74% | 69% | 71% | 66% | 66% | 70% | 63% | 59% | 69% |         |
| 8        | 78%                              | 70% | 69% | 65% | 61% | 62% | 59% | 62% | 56% | 65% |         |
| 9        | 76%                              | 61% | 62% | 57% | 60% | 54% | 61% | 52% | 50% | 60% |         |
| 10       | 74%                              | 68% | 61% | 58% | 71% | 64% | 63% | 54% | 50% | 63% |         |
| 11       | 83%                              | 79% | 72% | 70% | 77% | 77% | 73% | 73% | 67% | 75% |         |
| 12       | 78%                              | 78% | 75% | 74% | 77% | 71% | 62% | 54% | 44% | 70% |         |
| Combined | 80%                              | 72% | 70% | 67% | 68% | 66% | 64% | 64% | 59% | 68% |         |

# BOARD OUTCOME: LEARNING ENVIRONMENTS - MENTAL HEALTH

## SCHOOL OUTCOME: TO SUPPORT THE MENTAL HEALTH OF KINUSO STUDENTS

### STRATEGIES

#### Goal Setting

Establish clear and measurable goals for promoting mental health and wellness within the school.  
Ensure goals are aligned with the school mission, vision and values.

#### Resource Identification

Identify existing resources within the school community, such as counsellors, psychologists, and social workers. Explore external resources and partnerships with mental health organizations, community agencies, and healthcare providers. Wellness workers help facilitate intervention strategies and counsel students when needed. They help students who need support for such issues as mental health, abuse and intervention strategies.

#### Prevention and Early Intervention Strategies

Implement evidence-based programs and practices to promote mental health and prevent common issues such as anxiety, depression, and substance abuse.  
Provide training for staff on recognizing signs of distress and implementing early intervention strategies.

#### Promotion of Positive School Climate

Foster a supportive and inclusive school environment where students feel safe, respected, and valued. Implement strategies to prevent bullying, harassment, and discrimination.

#### Curriculum Integration

Integrate mental health education into the curriculum at appropriate grade levels.  
Provide students with knowledge and skills to build resilience, manage stress, and maintain positive relationships.

### PERFORMANCE MEASURES

Gather baseline data based on how many students attend sessions with wellness workers.

Attendance increases to 80%

Increase citizen of the month awards.

Follow student survey to see if students feel safe, happy and a sense of belonging at school

# BOARD OUTCOME: CHARACTER EDUCATION

## SCHOOL OUTCOME: TO BUILD CHARACTER EDUCATION

### Strategies

#### Goal Setting

Establish clear, measurable objectives to guide the promotion and development of character education.

#### Resource Identification

Assess existing character education traits and resources, and identify gaps that require further development or support.

#### Prevention and Early Intervention Strategies

Implement evidence-based programs, activities, and practices that proactively support the development of character education.

#### Promotion of a Positive School Climate

Cultivate a supportive, inclusive, and respectful school environment in which all students feel safe, valued, and engaged. Implement proactive measures to prevent bullying, harassment, and discrimination.

#### Curriculum Integration

Embed character education across subject areas and grade levels in a developmentally appropriate manner. Equip students with the knowledge, skills, and competencies necessary to develop strong character.

## PERFORMANCE MEASURES

Increase awards and incentives

increase leadership and mentorship opportunities

report character education on report cards

increase safe, warm and caring environment data on AERR by 10%